

Welcome to Rosedale

Sunday August 2nd, 2015

Welcome & Announcements

Invocation

Musical Praise & Worship

Family Prayer

Scripture Reading..... Mark 4:21-34

Message..... Pastor John Bellingham

PARABLES OF THE KINGDOM

Lord's Table

Final Song

Benediction

Memory Verses for Junior Church:

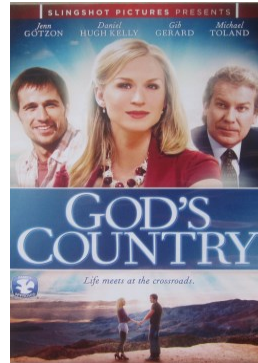
Younger Elementary:

Review: “For we are God’s workmanship, created in Christ Jesus to do good works, which God prepared in advance for us to do”
- Ephesians 2:10

Middle Elementary:

Review: “But in your hearts set apart Christ as Lord. Always be prepared to give an answer to everyone who asks you to give the reason for the hope that you have. But do this with gentleness and respect.” - 1 Peter 3:15

New in the Rosedale Library:



God's Country: (DVD) God's Country shows that with faith and love it's never too late to learn where real riches can be found.

Families of the Week

Please remember to pray for and to encourage the following people this week

<u>Monday</u>	Sarides, Costa & Isabel
<u>Tuesday</u>	Sarides, Daniella
<u>Wednesday</u>	Sarides, Nick
<u>Thursday</u>	Schoenfeldt, Eileen
<u>Friday</u>	Schoenfeldt, Jeffrey
<u>Saturday</u>	Schoenfeldt, Darryl & Diane Nathan, Ryan

ROSEDALE BAPTIST CHURCH



Reaching up....

Reaching in....

Reaching out...

11 Rosedale Place
Welland, ON L3B 1J2
905-735-0788
Pastor: John C. Bellingham

www.rosedalebaptistwelland.com

This Week at Rosedale

Tuesday: Men's Bible Study – 9:30 am

Wednesday: Prayer and Praise – 7:00 pm

Saturday: Men's Bible Study – 8:00 am

Sunday: Christian Foundations – 9:00 am
Corporate Worship – 10:30 am
Hotdog and Sundae Sunday

Sundae Sunday: Next Sunday after the morning service we will be having a Hotdog and Sundae Sunday. We are asking for a donation which will help us reach our goal of sending enough money to purchase 100 sewing machines for oppressed women in India. Thank you for your support!

Christian Foundations – New Series: “Are you pro-life or pro-choice? Few questions have divided people as deeply or as emotionally as this one. Abortion is such a deeply divisive issue because fundamental moral issues are at stake. In this series Dr. R.C. Sproul moves beyond the shouting matches in order to examine the issue calmly and rationally. With clarity and compassion he explains why abortion is a violation of God's purposes for His creation.”

Open Arms Mission Collection: August is hygiene collection month at Open Arms. Please bring hygiene products to our collection bin over the next month. The mission has asked Rosedale to focus specifically on feminine paper products.

Parables of the Kingdom - Mark 4:21-34

I. The Agents of God's Kingdom (vv. 21-22)

- 1) The Lamp is Primarily a Picture of Jesus
 - a. Literal translation of Greek text in v. 21: “Does the lamp come....”
 - b. Jesus is the light of the world who has come to shine in the darkness (John 8:12)
 - c. The Messianic identity of Jesus was kept hidden for a short time during His earthly ministry but was later fully revealed
- 2) The Lamp is a Picture of Jesus' Followers
 - a. We are the light of the world (Matt 5:14-16)
 - b. We are to shine like stars (Philippians 2:15)

Application: The disciples probably wondered whether they were to follow Jesus' pattern of ‘concealing’ the truth from certain people by speaking in riddles (see 4:10-12). Jesus makes it clear that His followers are to reflect the light and truth of Christ everywhere we go! The hidden ‘secret’ about Jesus is now out!

II. The Ethics of God's Kingdom (vv. 23-25)

- 1) Emphasis here is on how we ‘hear’ the Message
 - a. The extent to which you ‘hear’ God's Word determines how fruitful you will become
 - b. Those who neglect the ‘means of grace’ (ie. preaching, prayer, fellowship of believers etc.) will always remain spiritually poor
- 2) Image also used of God's Judgment (Matt 7:1-5)
 - a. Those who judge others without mercy will be judged without mercy (see James 2:13)
 - b. The same stick you use to measure other people will one day be used to measure you!

Application: The benefits we receive from God largely depend on the way in which we invest what

He's graciously given us. Sow sparingly and reap sparingly. Sow bountifully and reap bountifully!

III. The Growth of God's Kingdom (vv. 26-29)

Closely related to the ‘Parable of the Soils’

- a. Farmer (or ‘man’) is a picture of Christ and His faithful followers
- b. The seed is the ‘good news of the Kingdom’ which is being sown as the Word is preached
- c. Plant represents the Kingdom of God itself
 - i. The Parable of the Soils was about Personal Conversion
 - ii. Parable of the Growing Seed is about the growth of God's Kingdom
- d. Harvest represents second coming of Christ and the subsequent judgment (Joel 3:13; Revelation 14:14-20; Matt 13:36-43)

Application: We humans do not bring in the Kingdom of God – it is growing even as we sleep, and even when we don't fully understand the mysterious ways of God's plan! We are servants of the Kingdom, not the cause of the Kingdom.

IV. Consummation of God's Kingdom (vv. 30-33)

- 1) The Kingdom begins as something very small
 - a. People were doubting Jesus' teaching that the Kingdom had arrived – where is it??
 - b. Kingdom begins with a baby and a cross
- 2) The Kingdom grows into something wonderful
 - a. Mustard shrub could reach height of 10 feet!
 - b. Birds serve to emphasize the size of the shrub, and possibly the inclusion of Gentiles

Application: Don't worry whether the Kingdom of God is really coming in all of its fullness. Be Patient and trust in God to fulfill ALL of His promises!

